

Early Lessons from *Monitoring in Tidal Creeks of the Lower Patuxent*

Lora Harris

C.L.S. Hodgkins

J.M. Testa

W.R. Boynton

M.C. Day

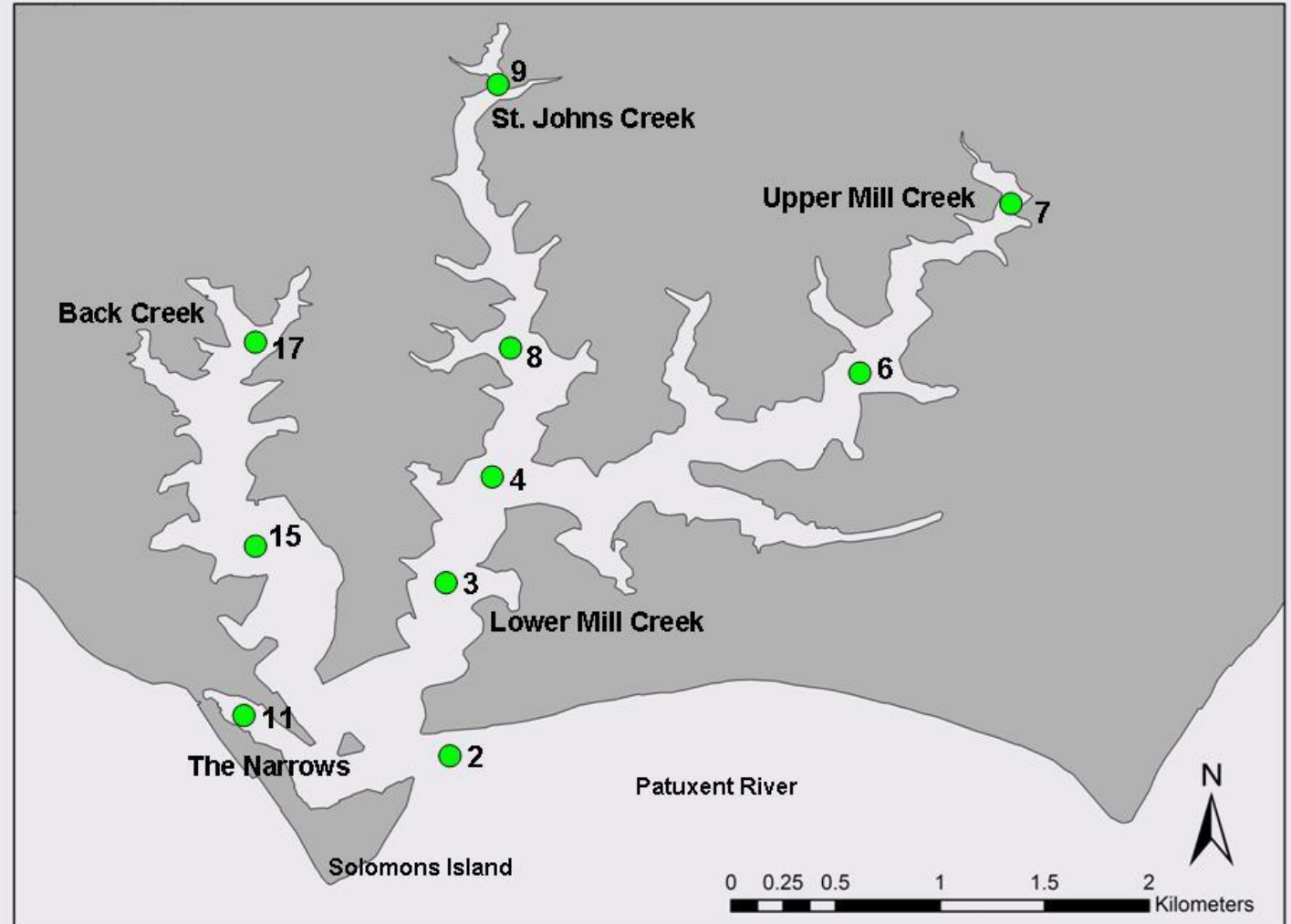
UMCES Chesapeake
Biological Laboratory



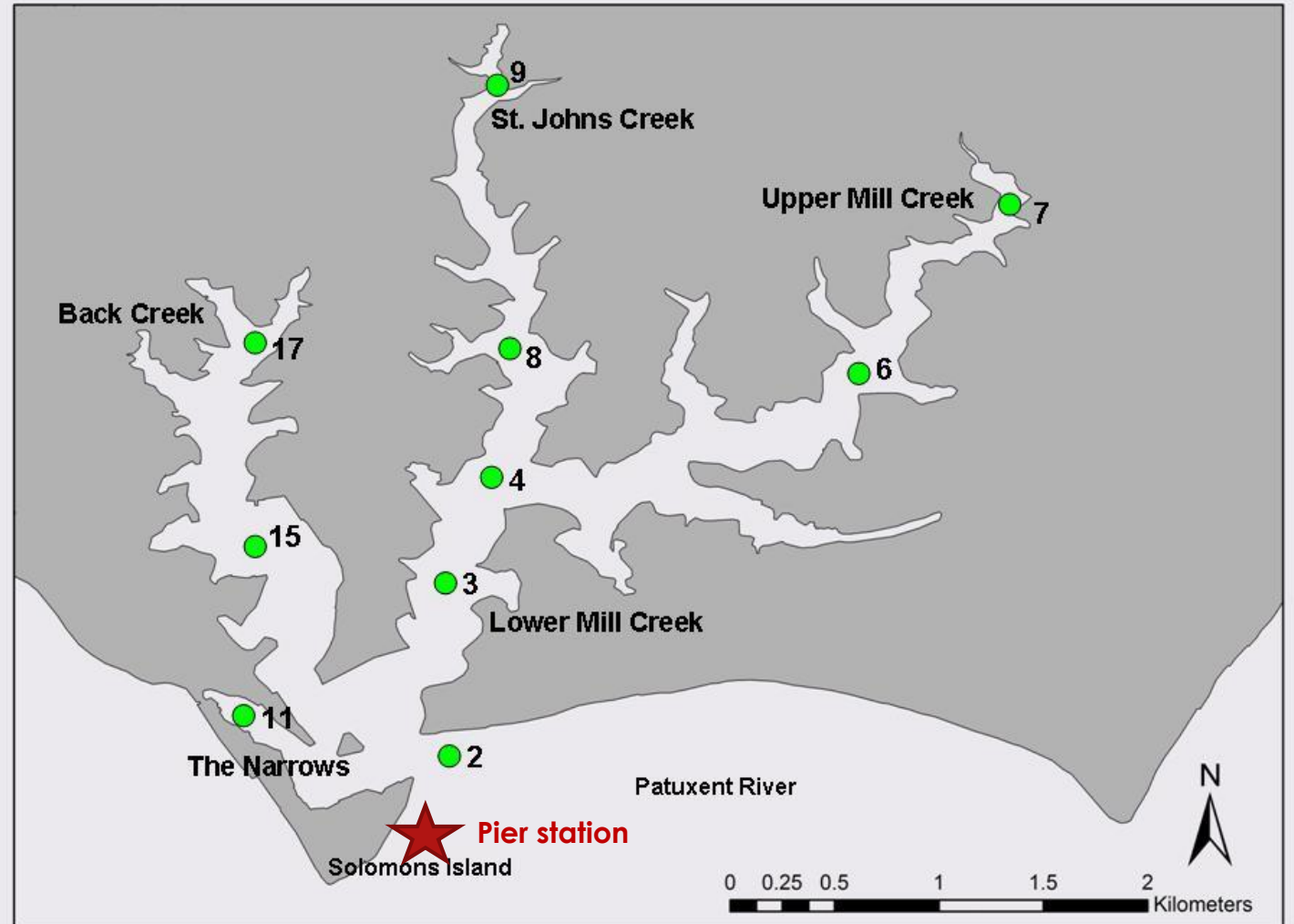




Solomons Harbor Study 1987-2015



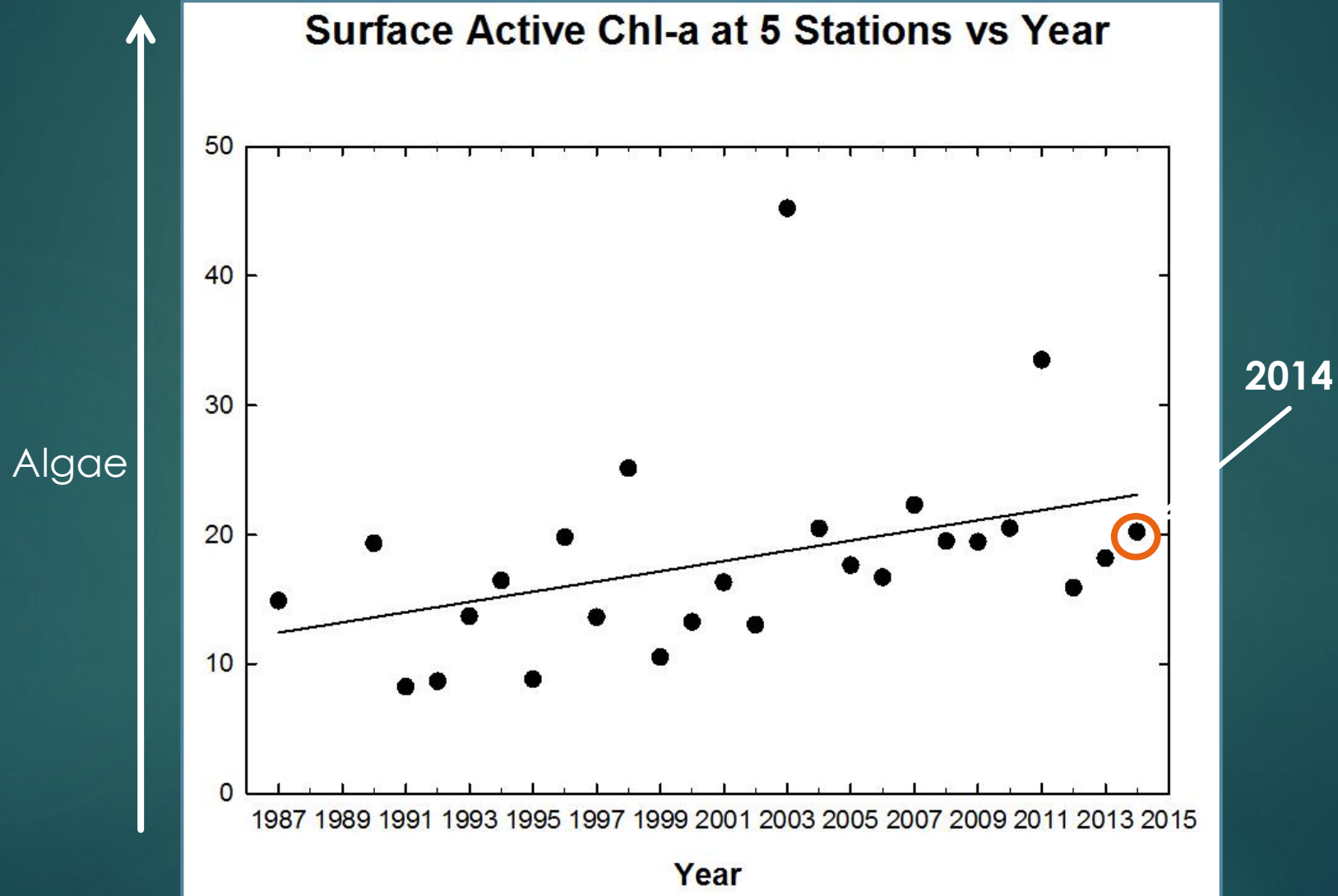
Solomons Harbor Study 1987-2015



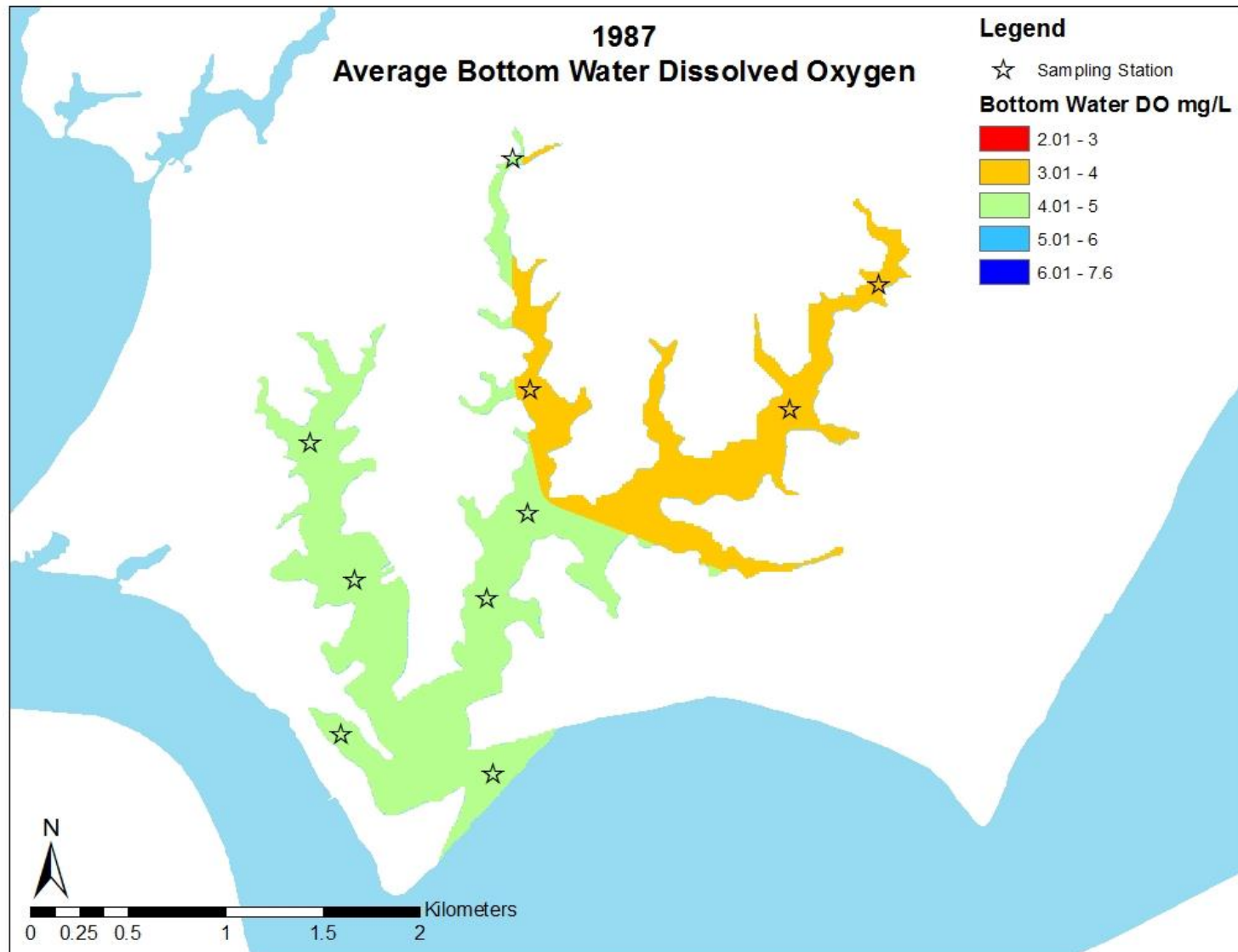


- Dissolved Oxygen
- Temperature
- Salinity
- Chlorophyll
- Secchi Disk

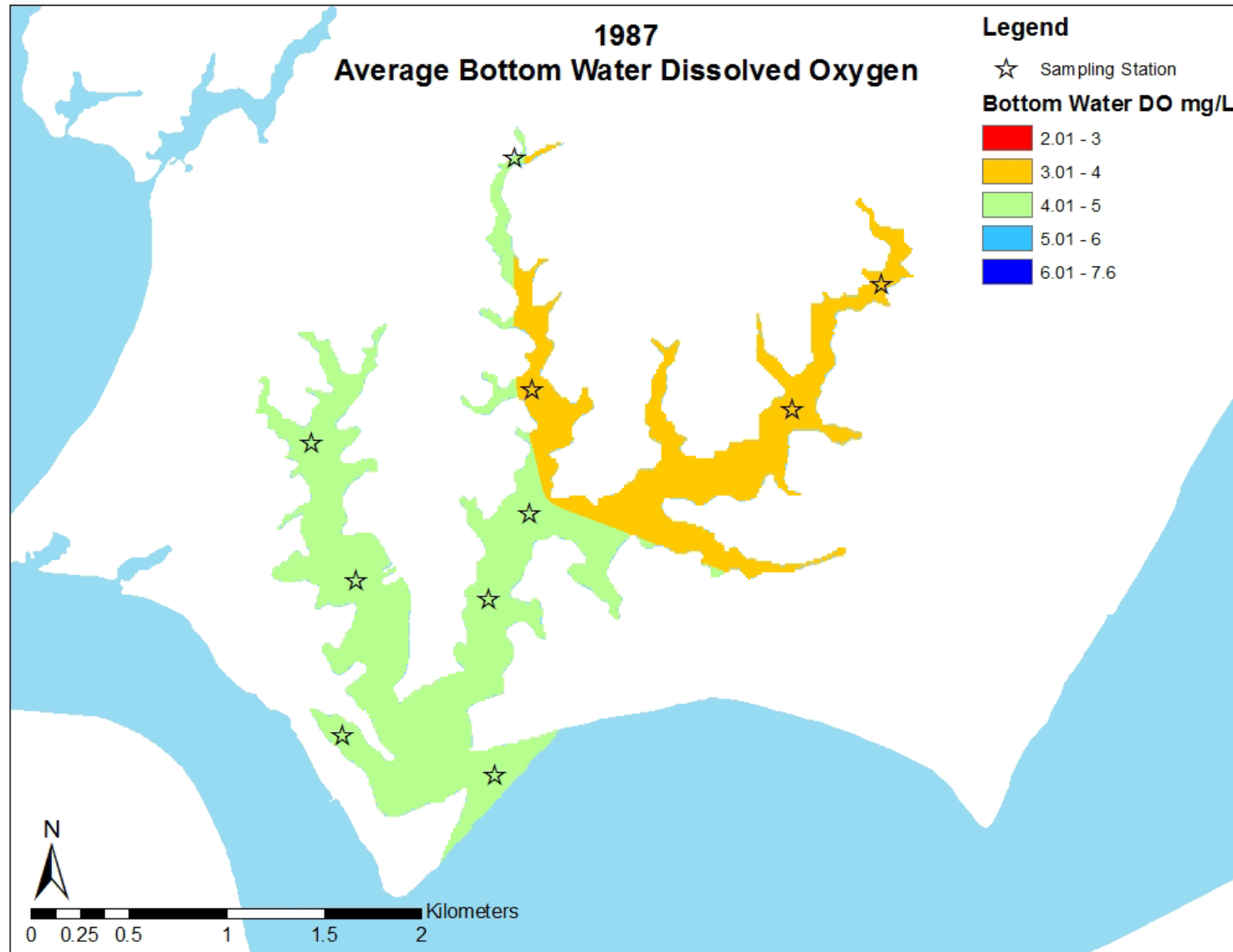
Algae at 5 Long-term Sites



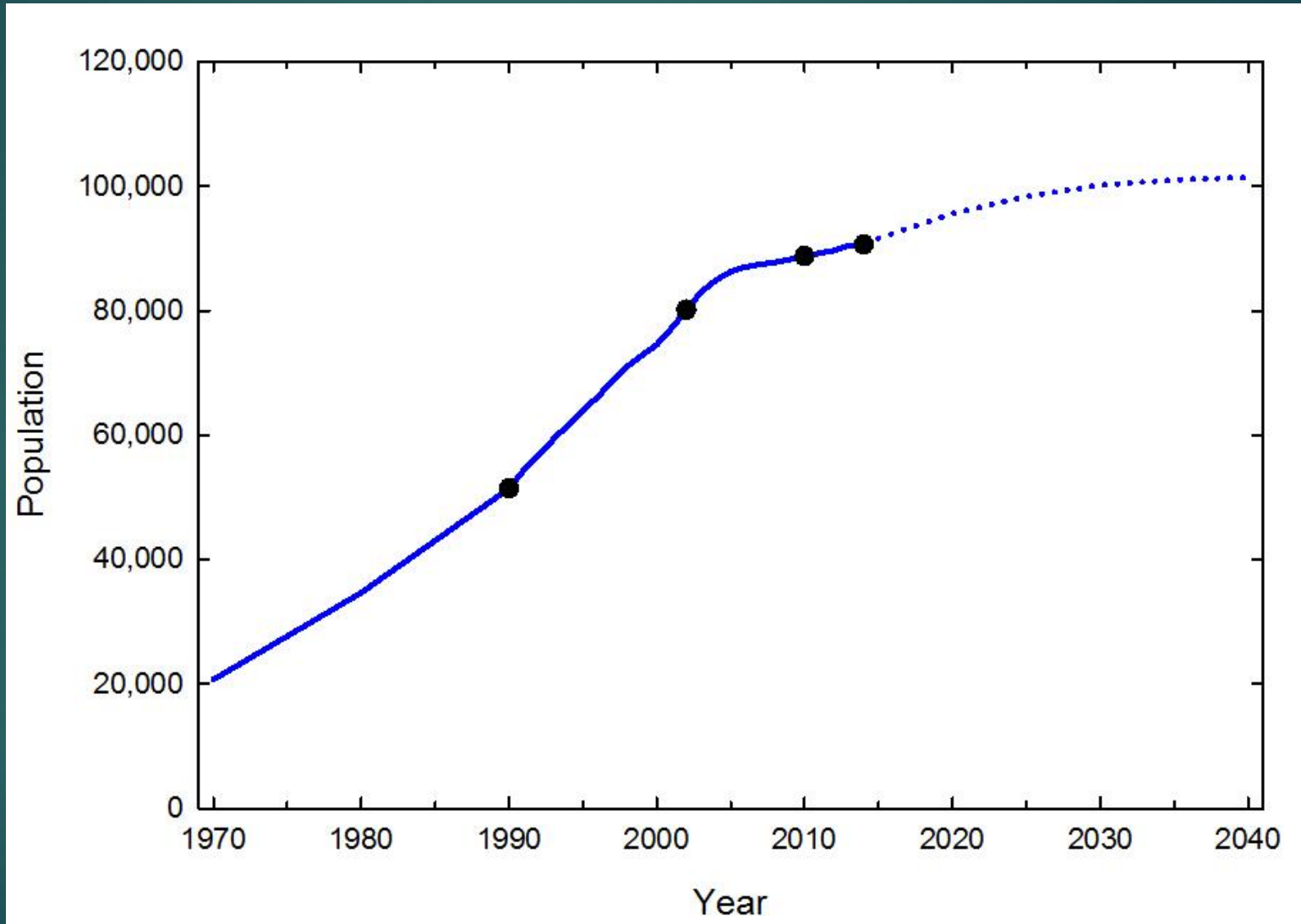
Bottom Water Oxygen



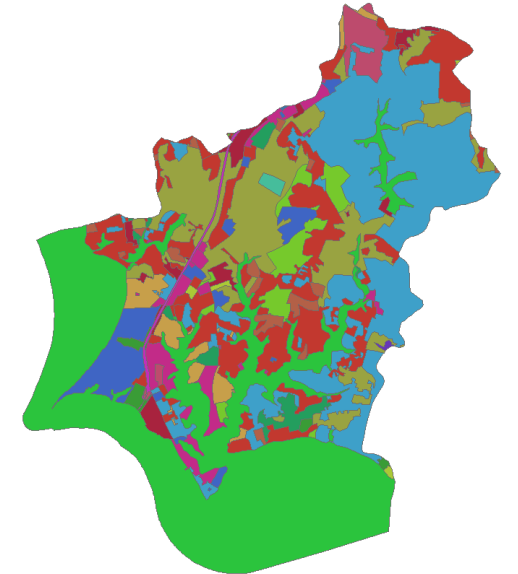
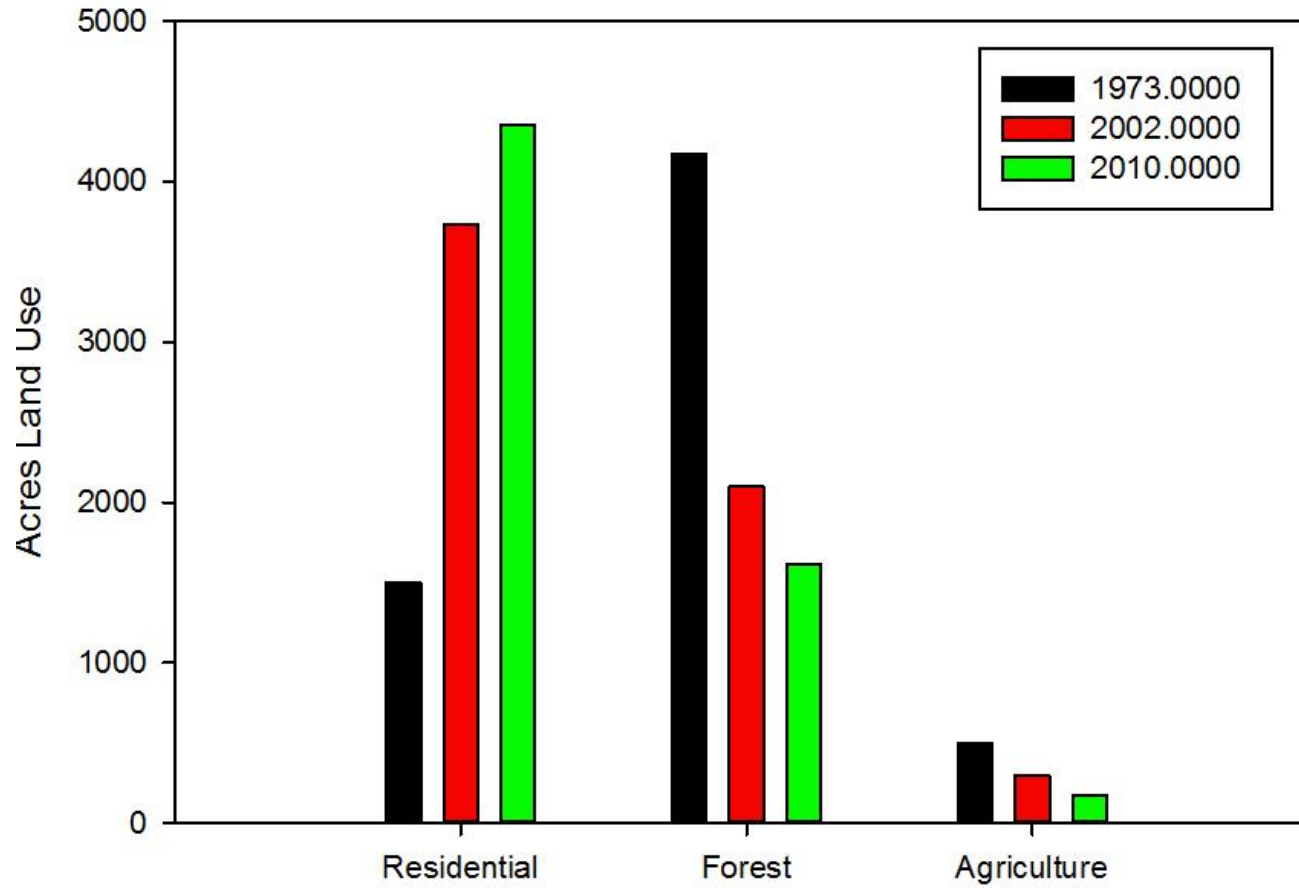
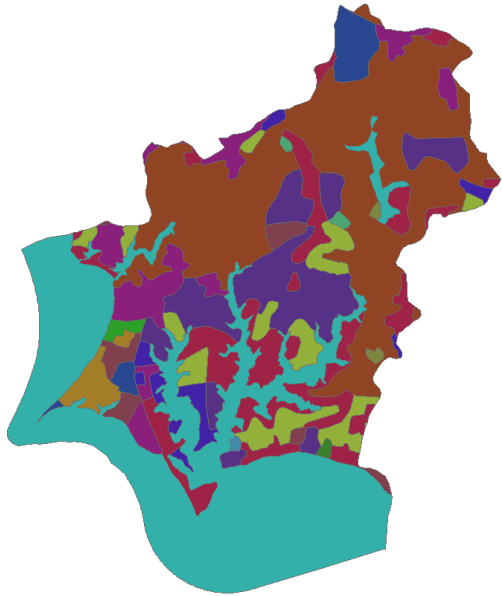
Bottom Water Oxygen



Calvert County Population Growth

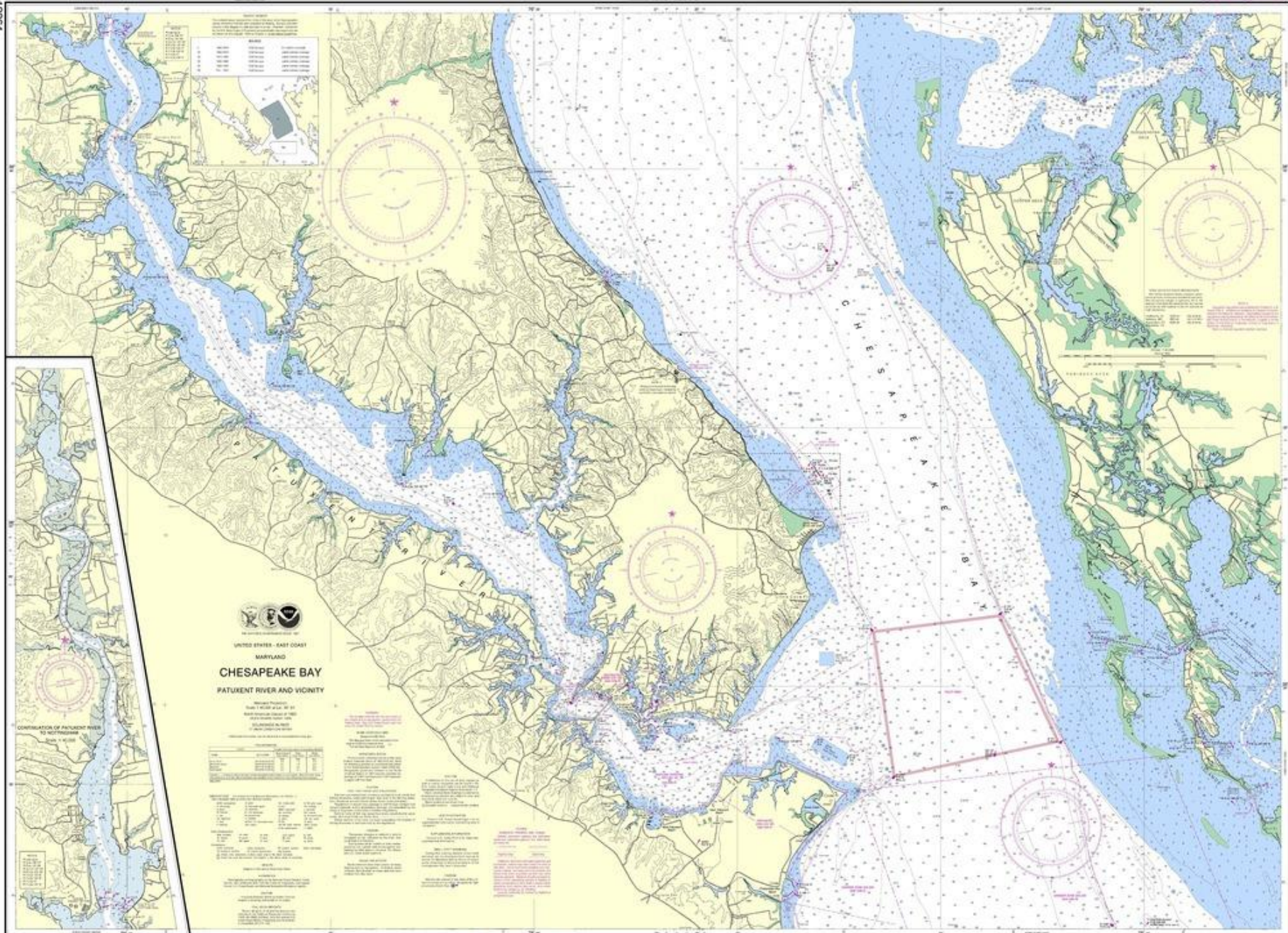


Land Use Change



12264

SOUNDINGS IN FEET



UNITED STATES - EAST COAST
 MARYLAND
**CHESAPEAKE BAY
 PATUXENT RIVER AND VICINITY**

Original Project
 Number 110264 dated 08/20/80
 Hydrographic Survey of the
 Chesapeake Bay and
 Patuxent River

Chart No.	Date	Scale	Author	Editor	Checker	Appr.	Pub.
110264	08/20/80	1:50,000	J. H. ...	J. H. ...	J. H. ...	J. H. ...	J. H. ...
110264	08/20/80	1:50,000	J. H. ...	J. H. ...	J. H. ...	J. H. ...	J. H. ...

NOTE: This chart is a reprint of the original chart published in 1980. It contains no new soundings or other information. The original chart is available for purchase from the National Oceanic and Atmospheric Administration, Office of Hydrography, 1315 East-West Highway, Silver Spring, MD 20910. The original chart is available in both paper and microfiche formats.

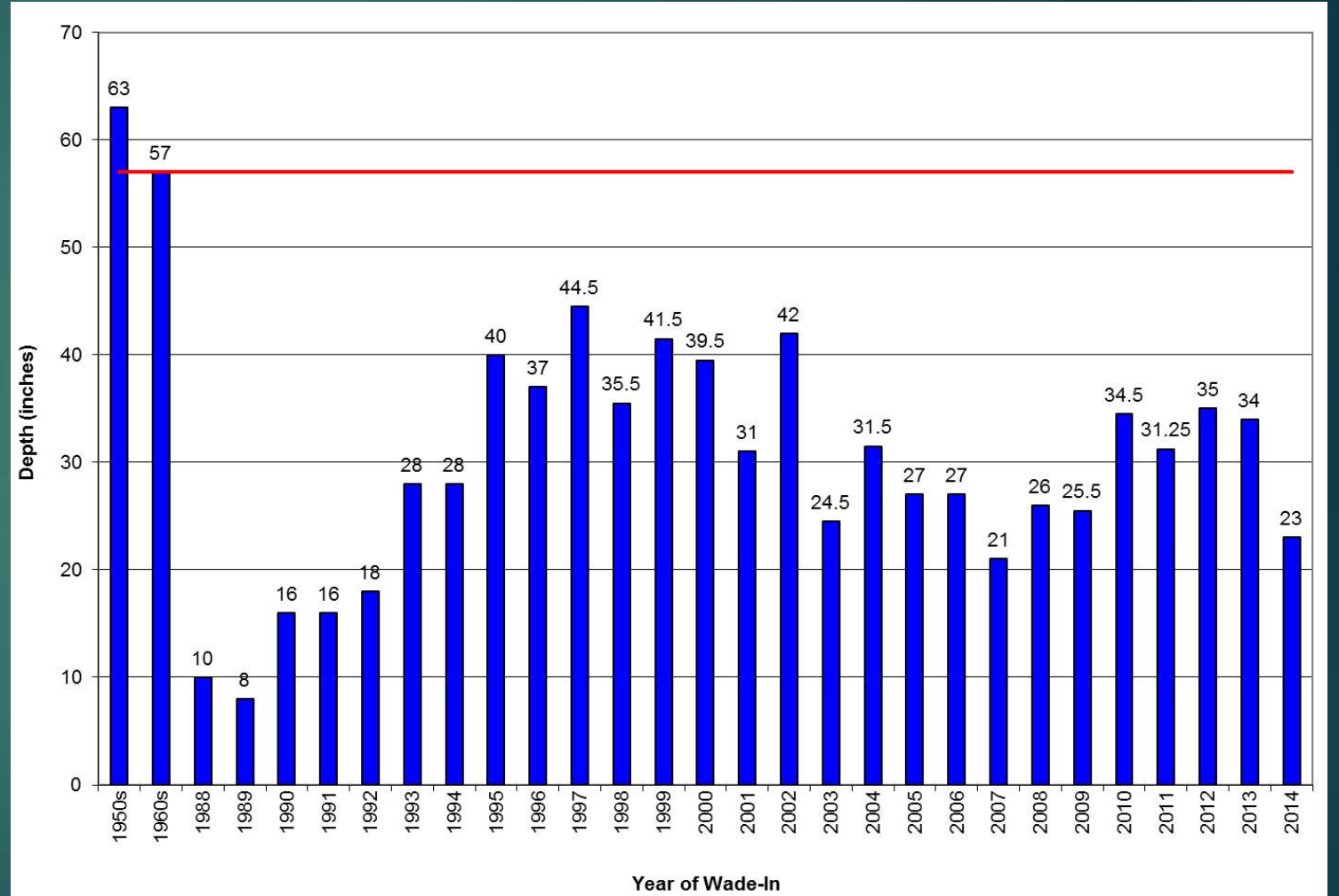
EXPLANATION

Soundings: Numbers and symbols indicating depth in feet. Symbols include dots for depths 1-10, crosses for 11-20, squares for 21-30, and triangles for 31-40. Larger symbols represent deeper soundings.

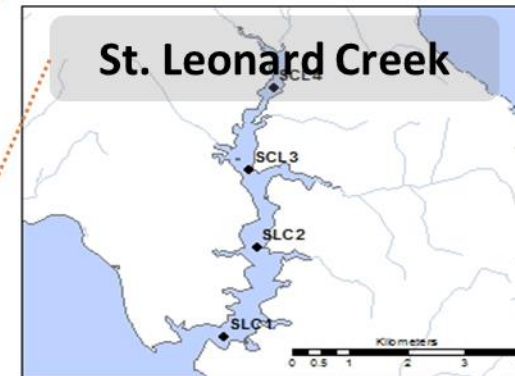
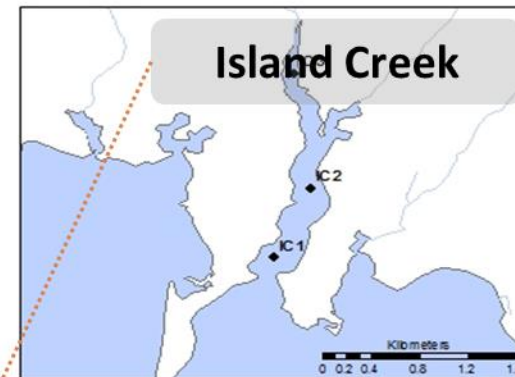
Navigation Symbols: Symbols for buoys, lights, and other navigational aids. Symbols include circles with numbers, circles with letters, and various geometric shapes.

Other Symbols: Symbols for rocks, shoals, and other underwater features. Symbols include circles with 'R' or 'S', circles with 'D', and various geometric shapes.

Qualitative Indicators

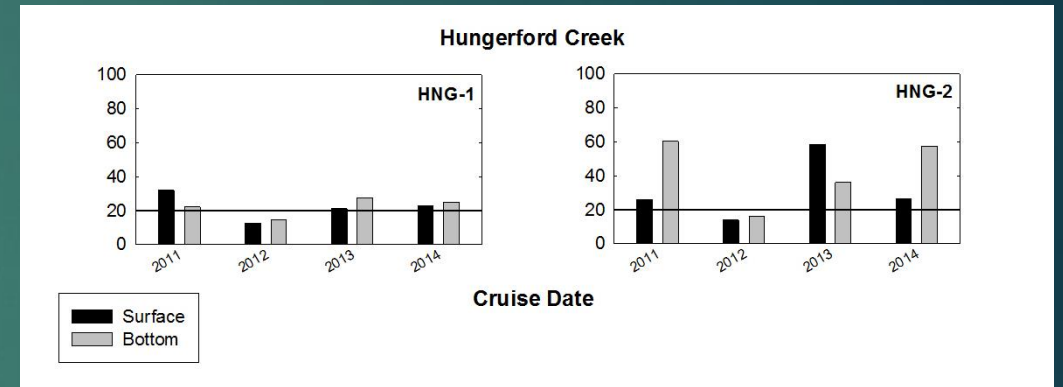
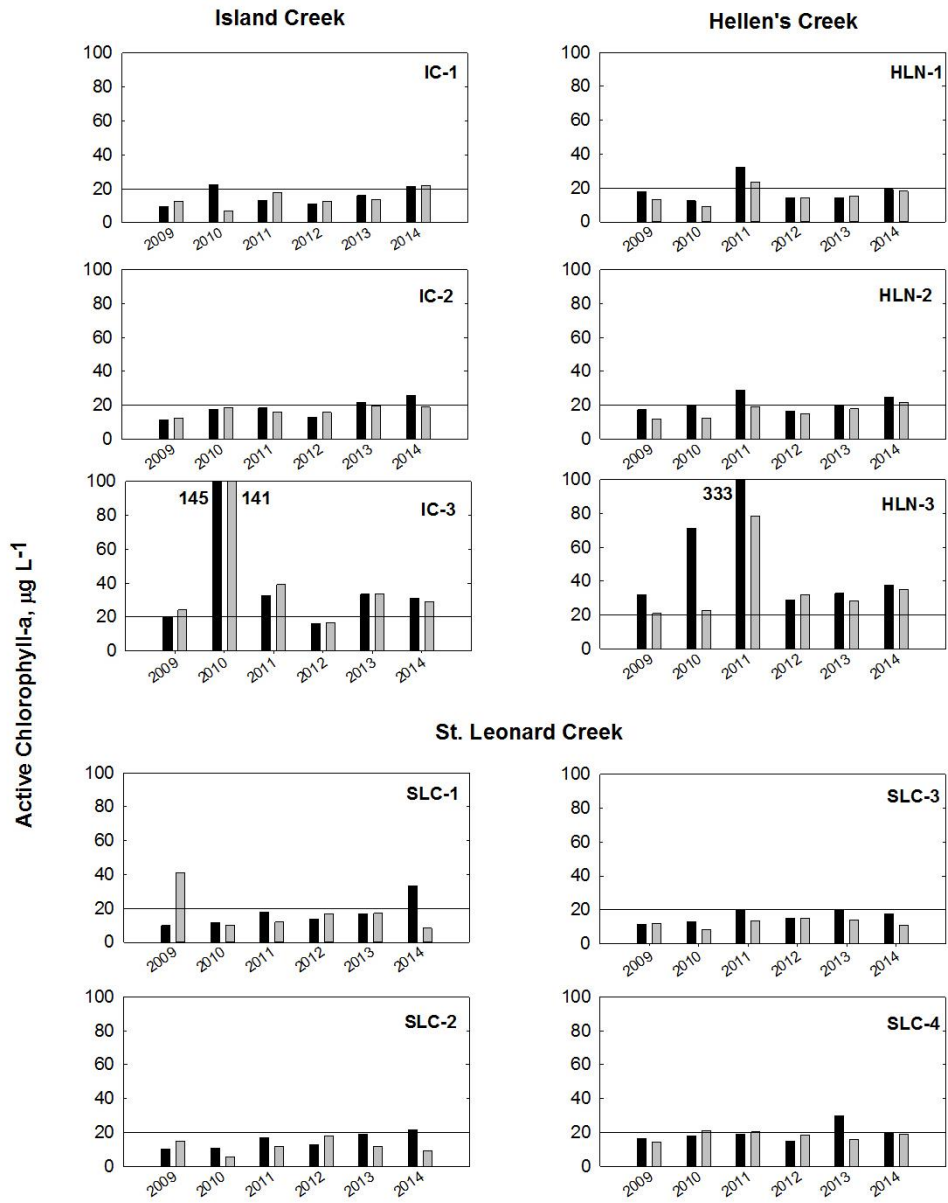


New Sites in Calvert County



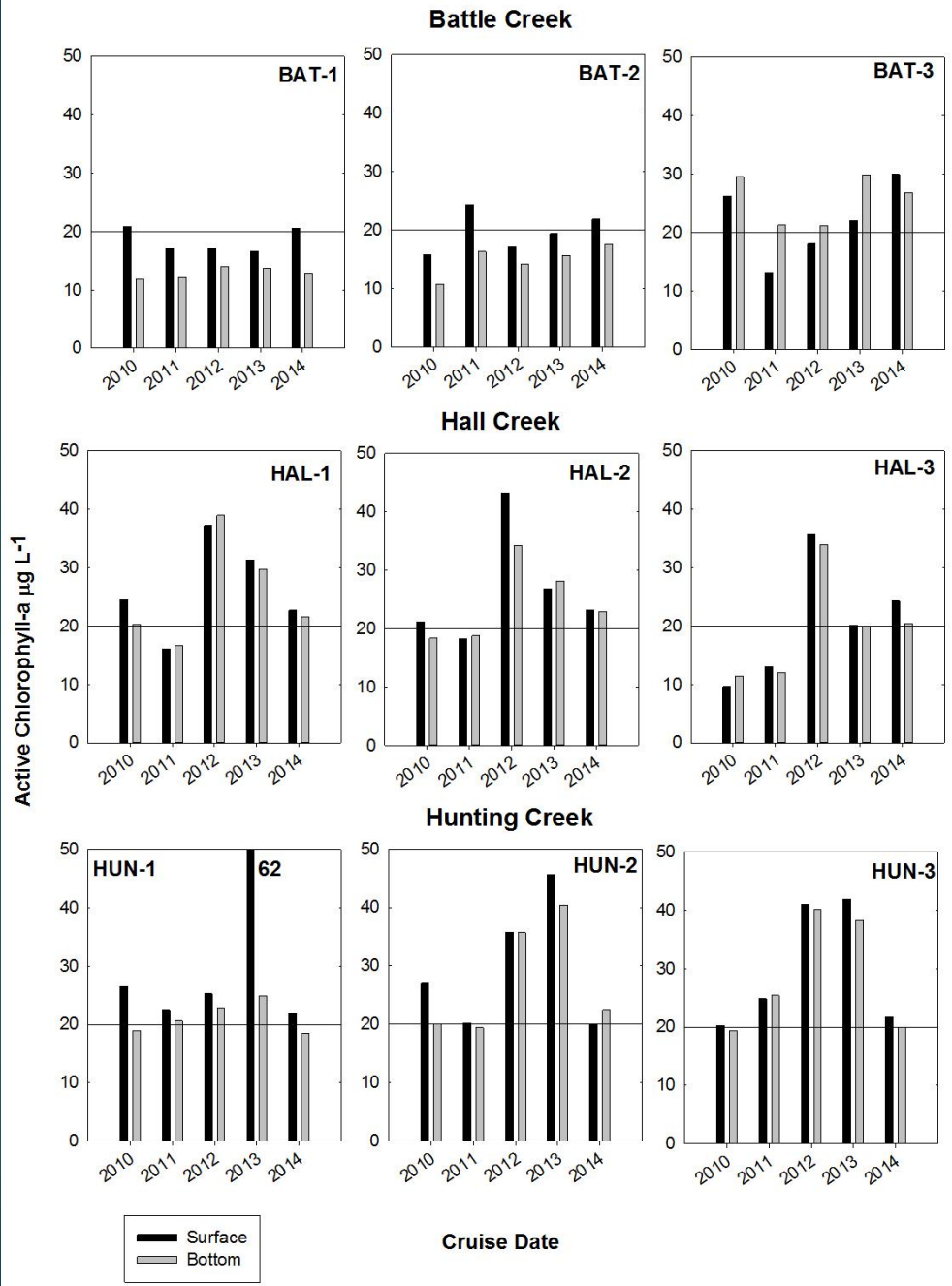
Lower Patuxent River Stations: Algae

Chlorophyll-a, $\mu\text{g L}^{-1}$



Upper Patuxent River Stations: Algae

Chlorophyll-a, $\mu\text{g L}^{-1}$

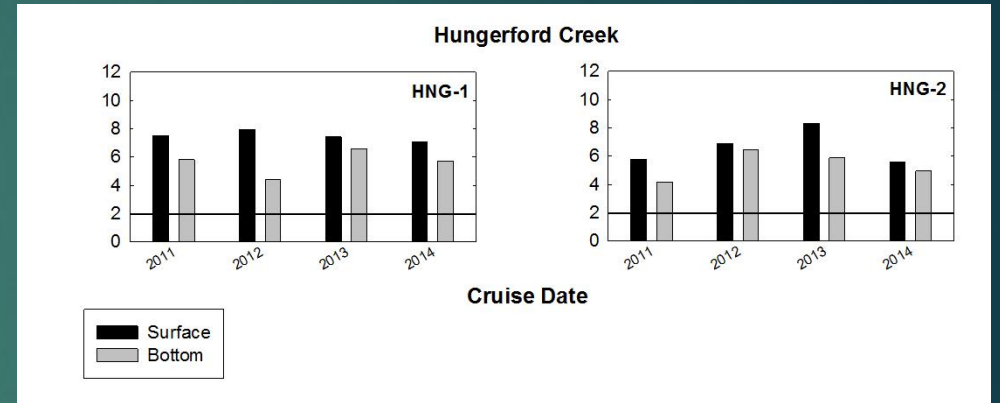
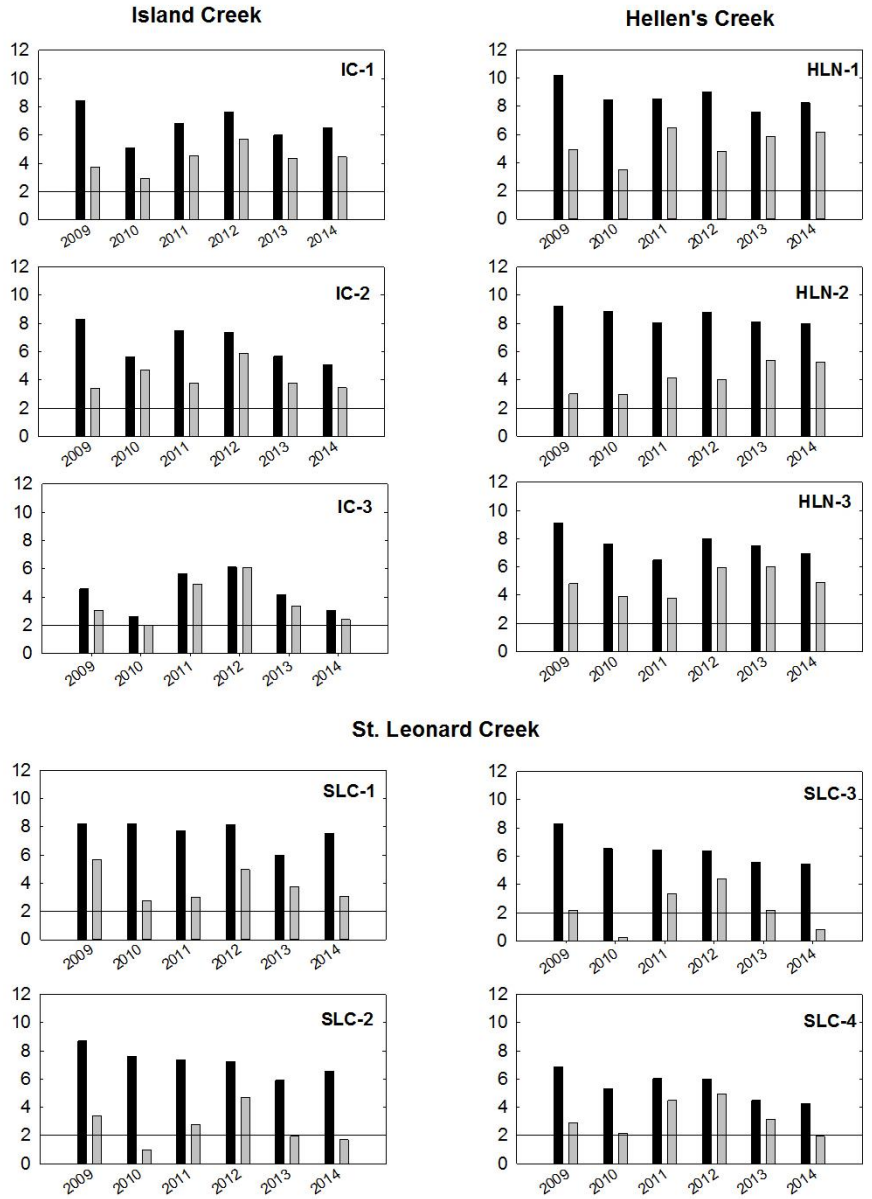


Lower Patuxent River Stations: Oxygen

Oxygen mg L⁻¹



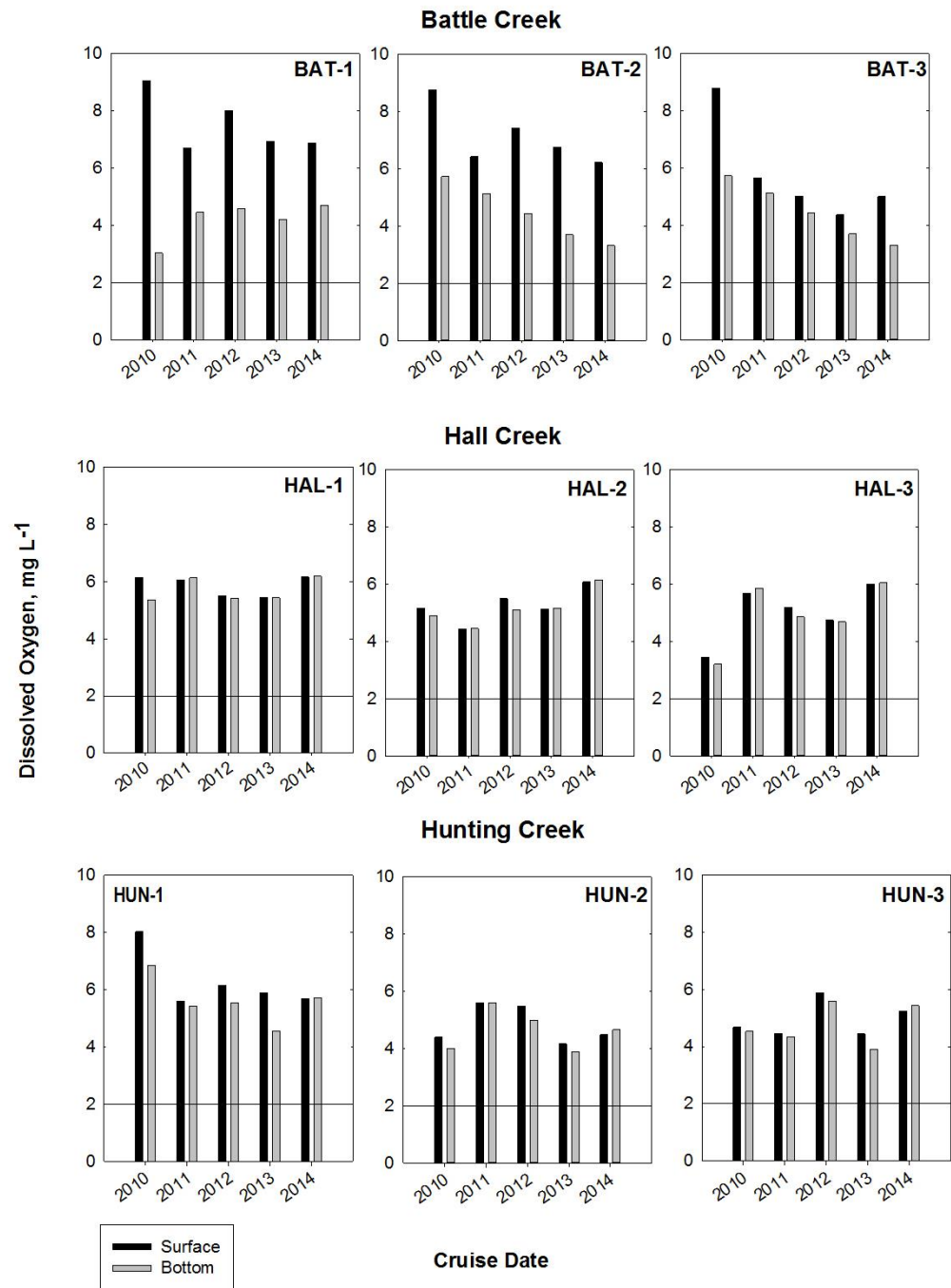
Dissolved Oxygen, mg L⁻¹



Surface
Bottom

Upper Patuxent River Stations: Oxygen

Oxygen mg L⁻¹



A PaxNet Data Clearinghouse

- ▶ Where is monitoring ongoing in the Patuxent estuary and watershed?
- ▶ Is there a need or desire to create a central clearinghouse for data, publications, reports?
- ▶ Are there opportunities to coordinate monitoring across spatial boundaries to increase impact of local efforts?



A Cast of Characters to Thank:

- ▶ Calvert County Board of County Commissioners
- ▶ Walter Boynton & Jeremy Testa
- ▶ Gonzo Lab Past and Present
- ▶ NASL

